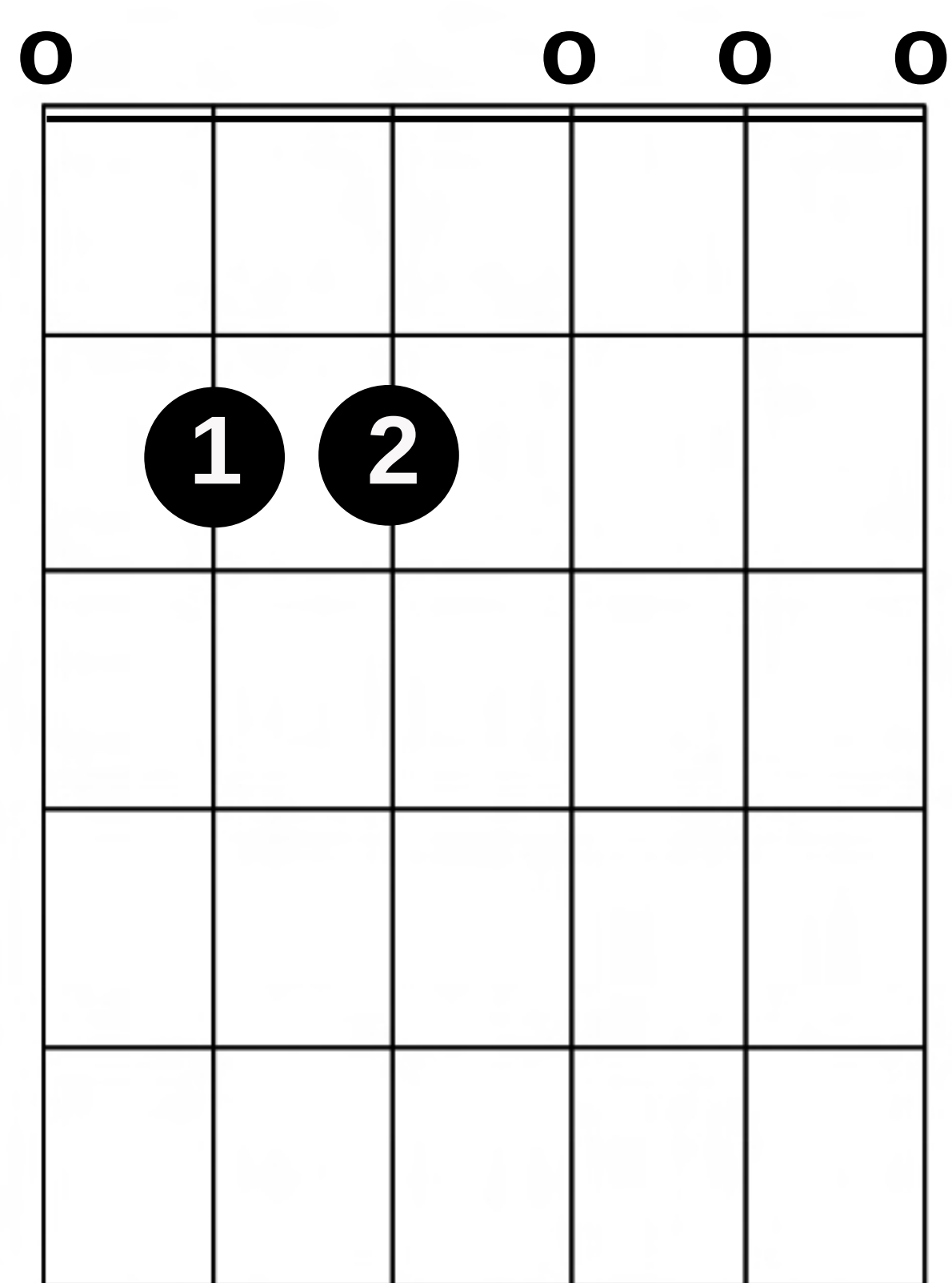
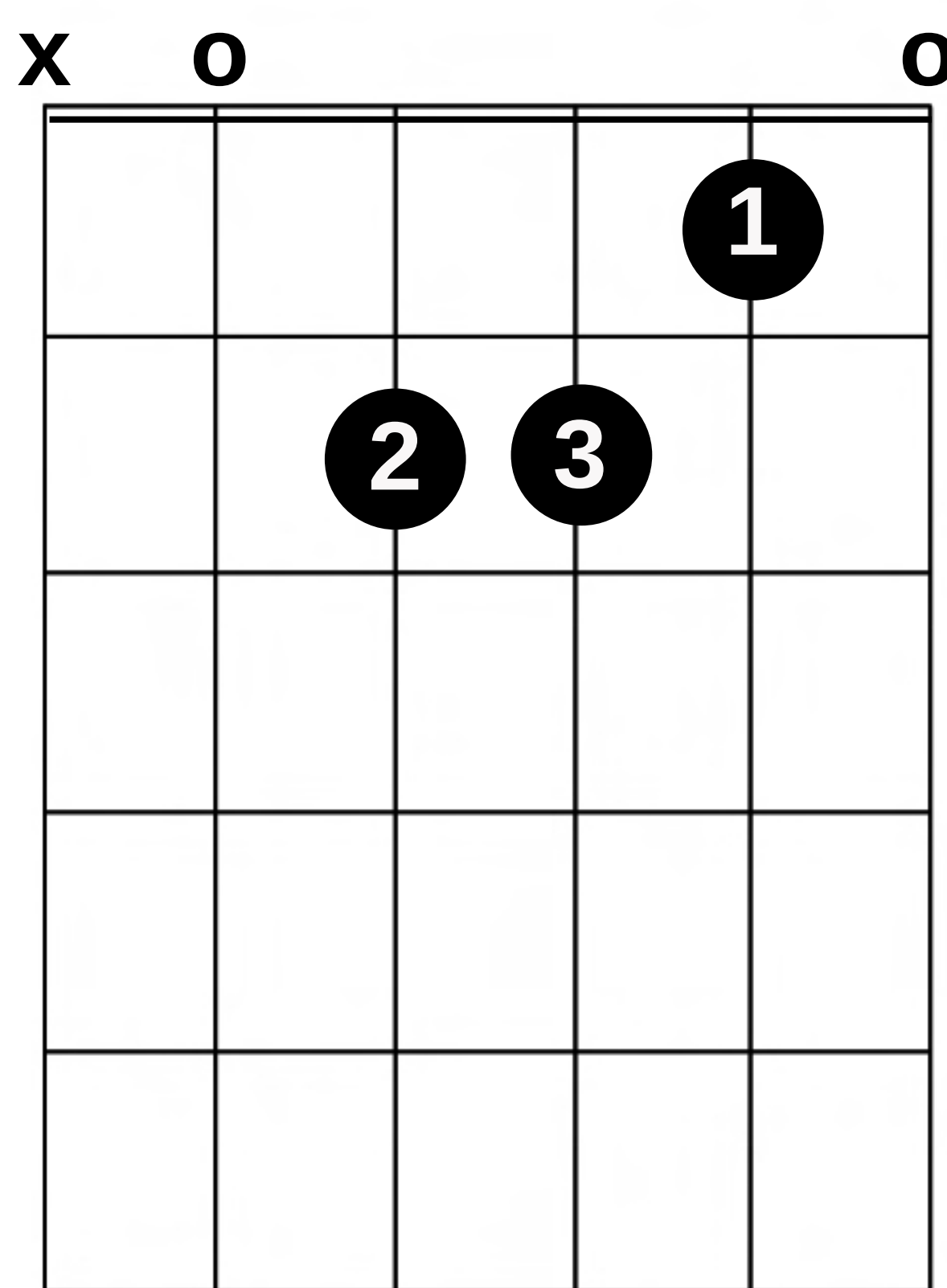


# Open Chords #1

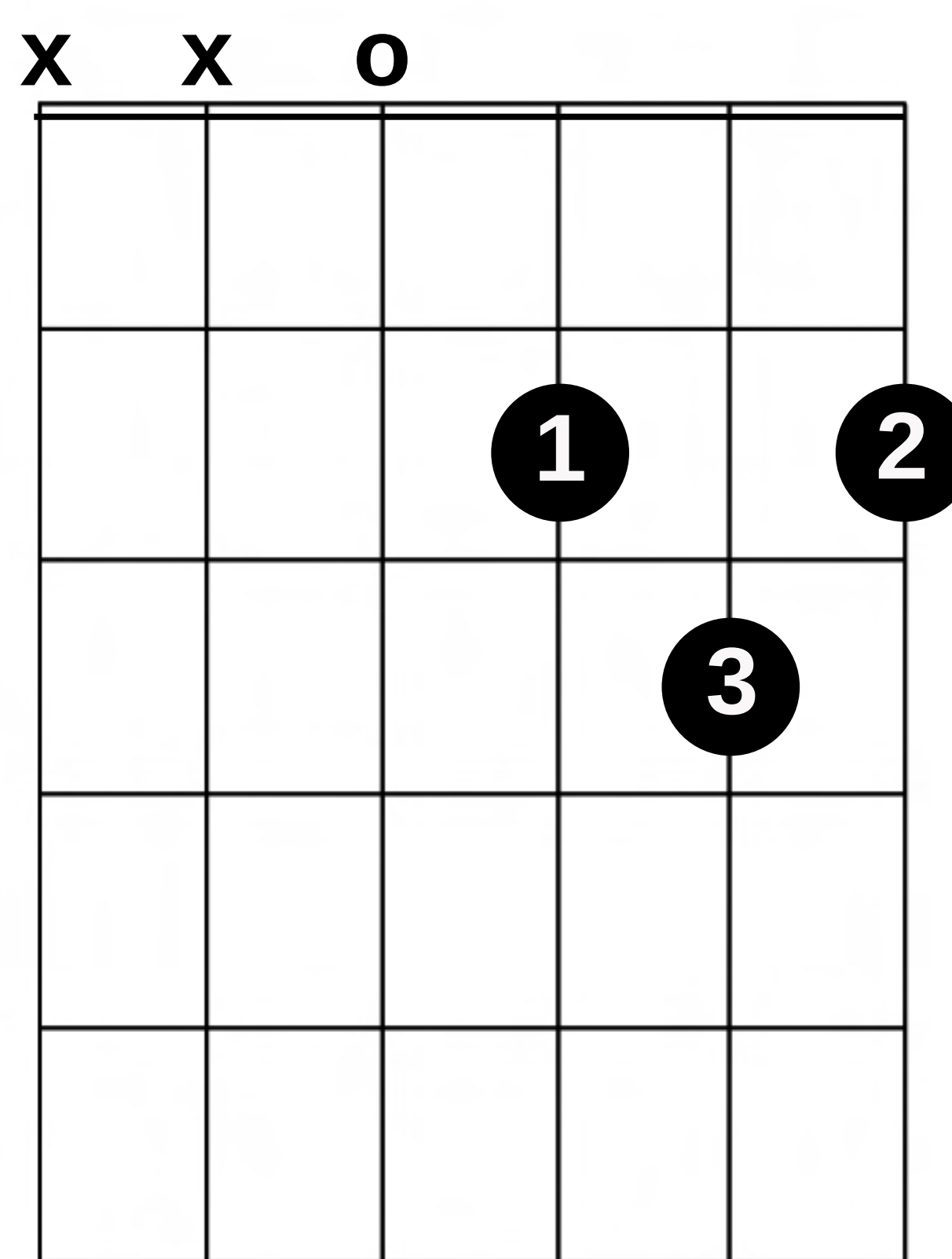
**Em** (E minor)



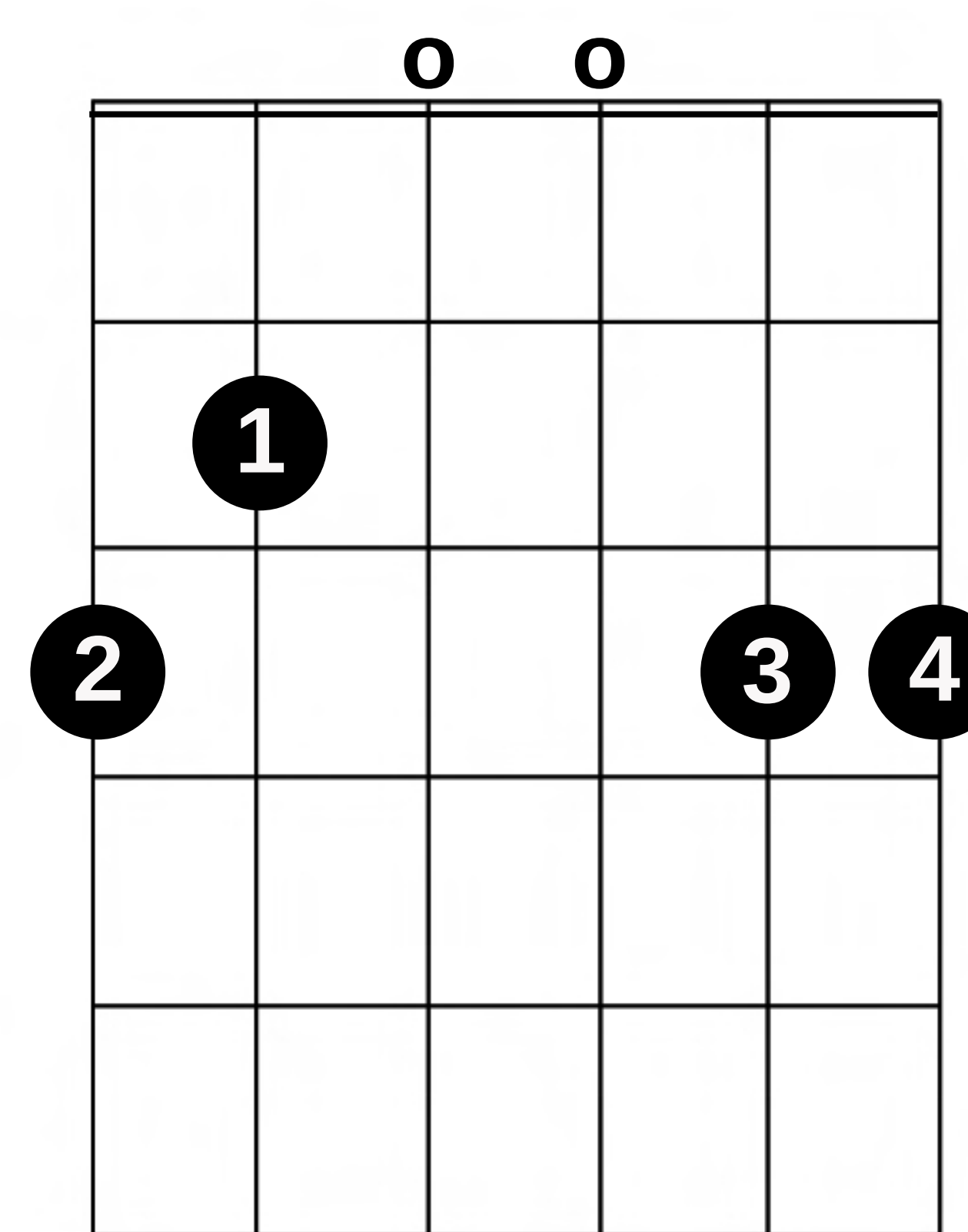
**Am** (A minor)



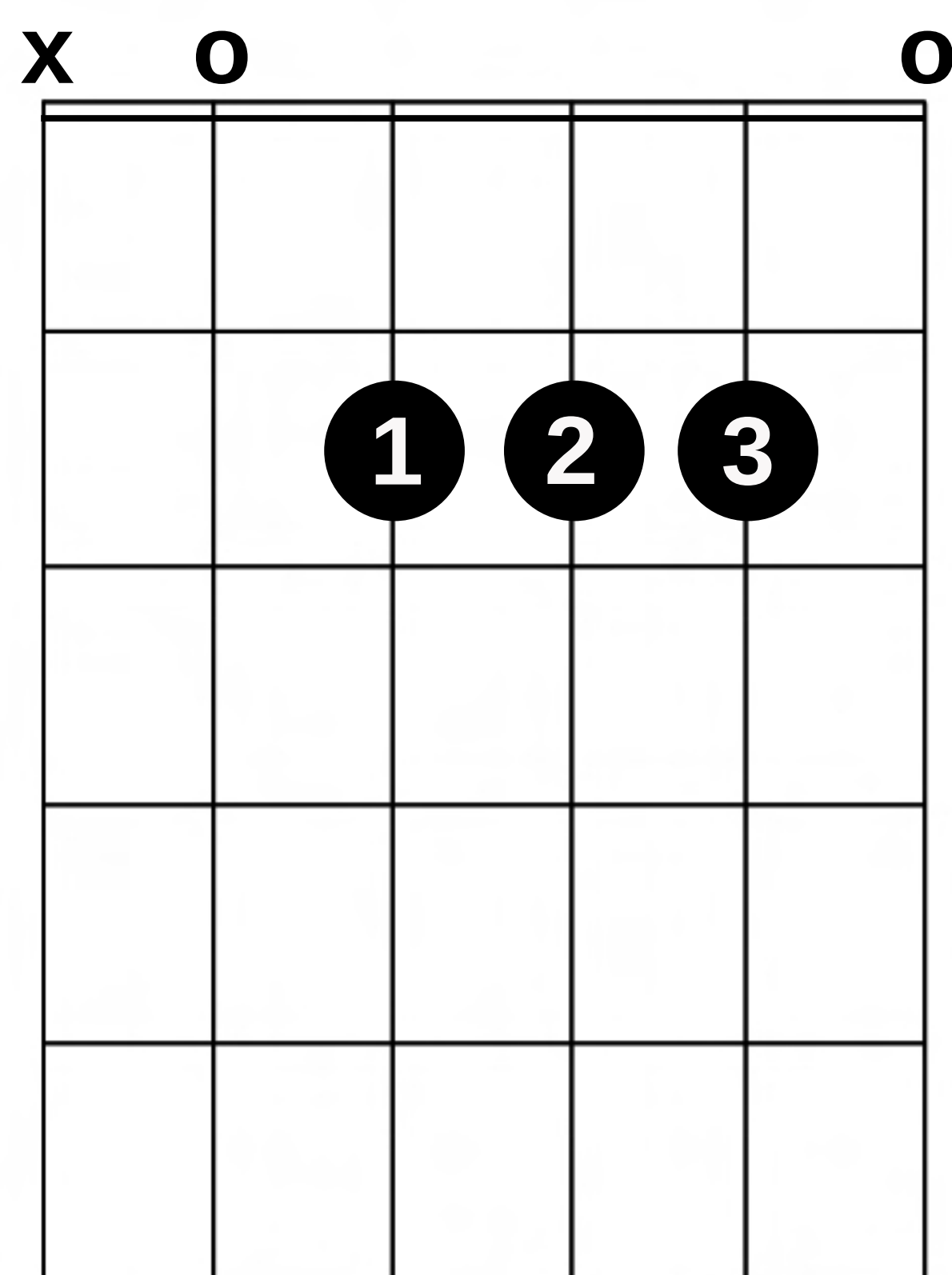
**D** (D major)



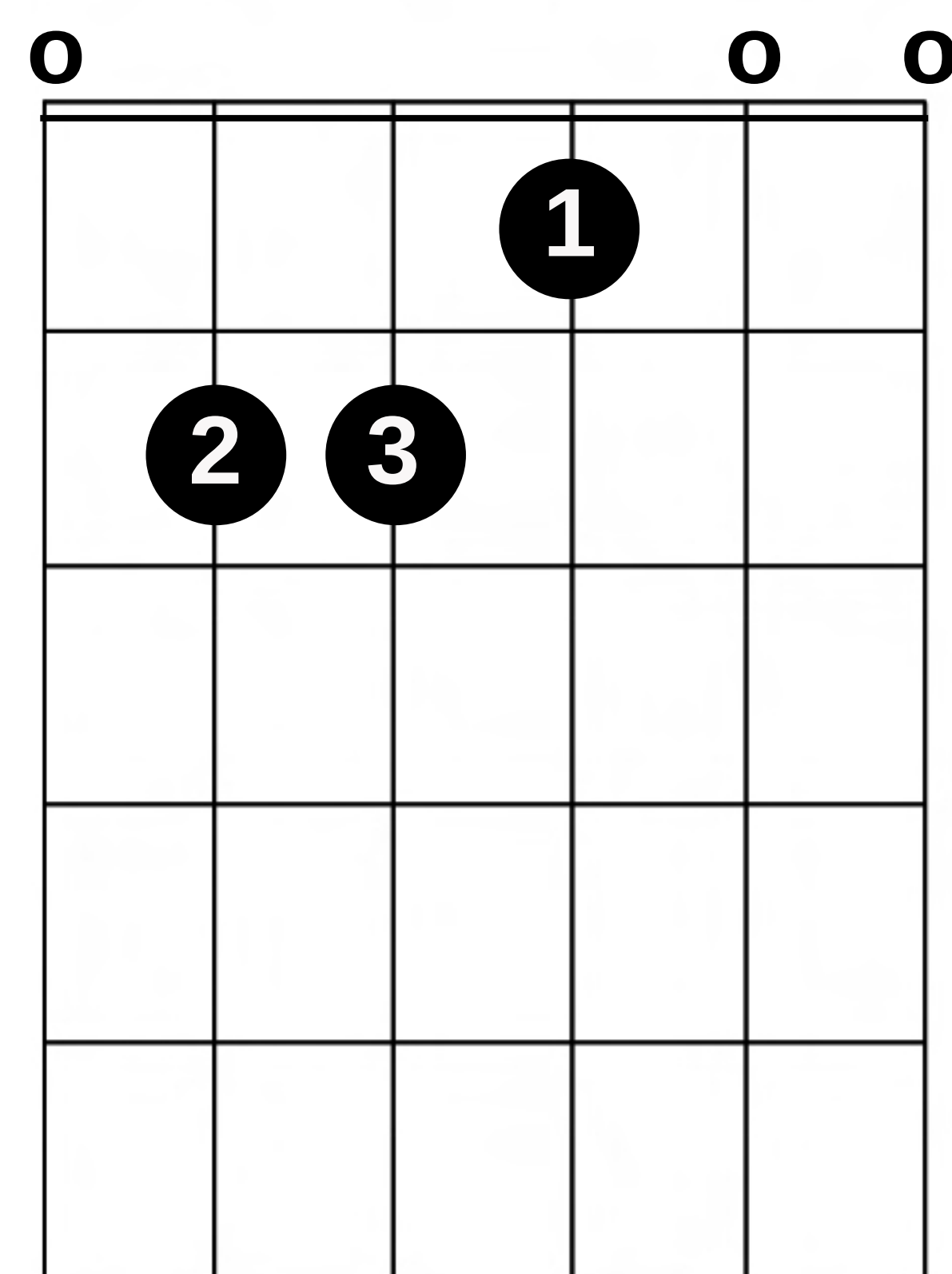
**G** (G major)



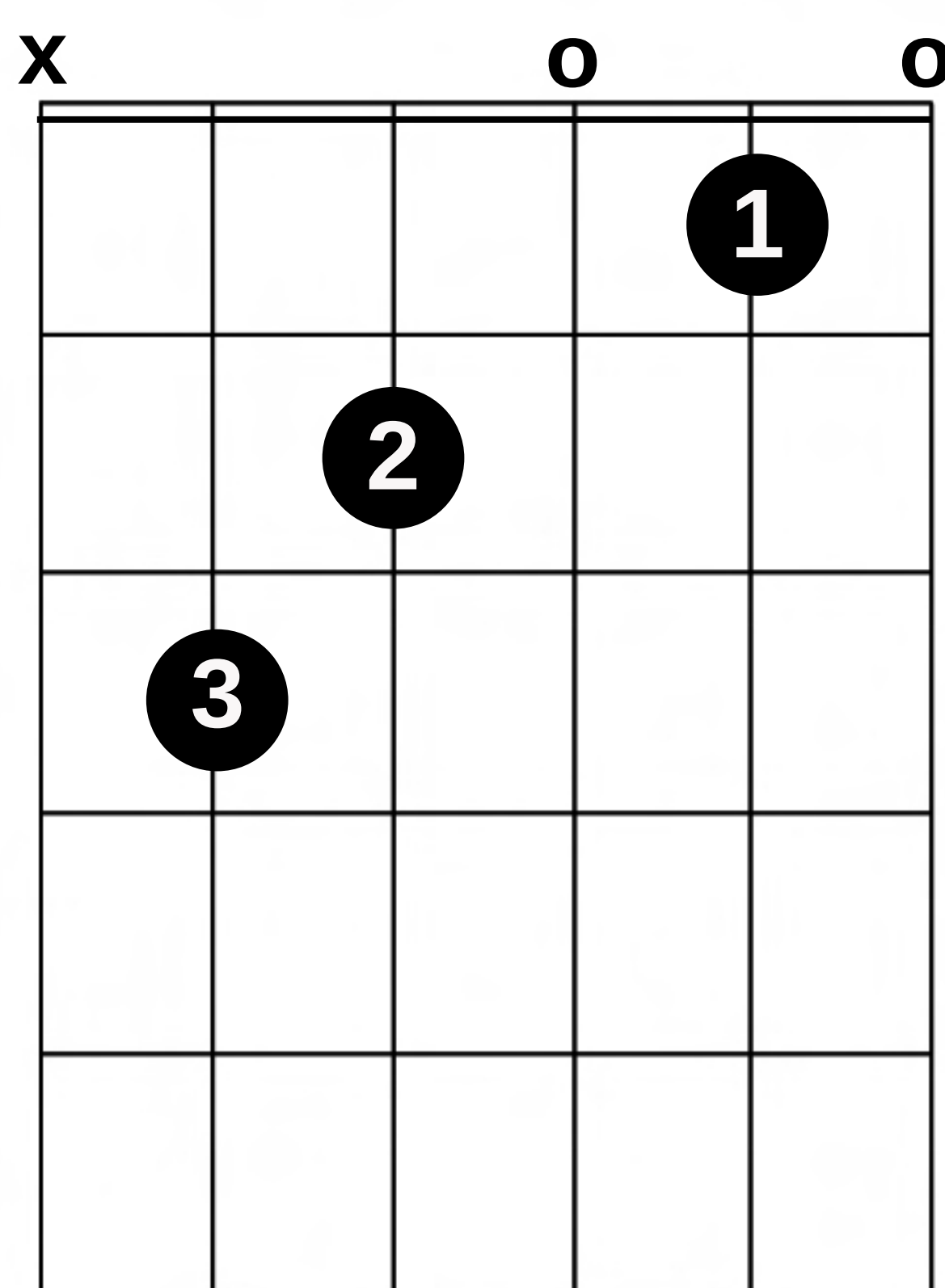
**A** (A major)



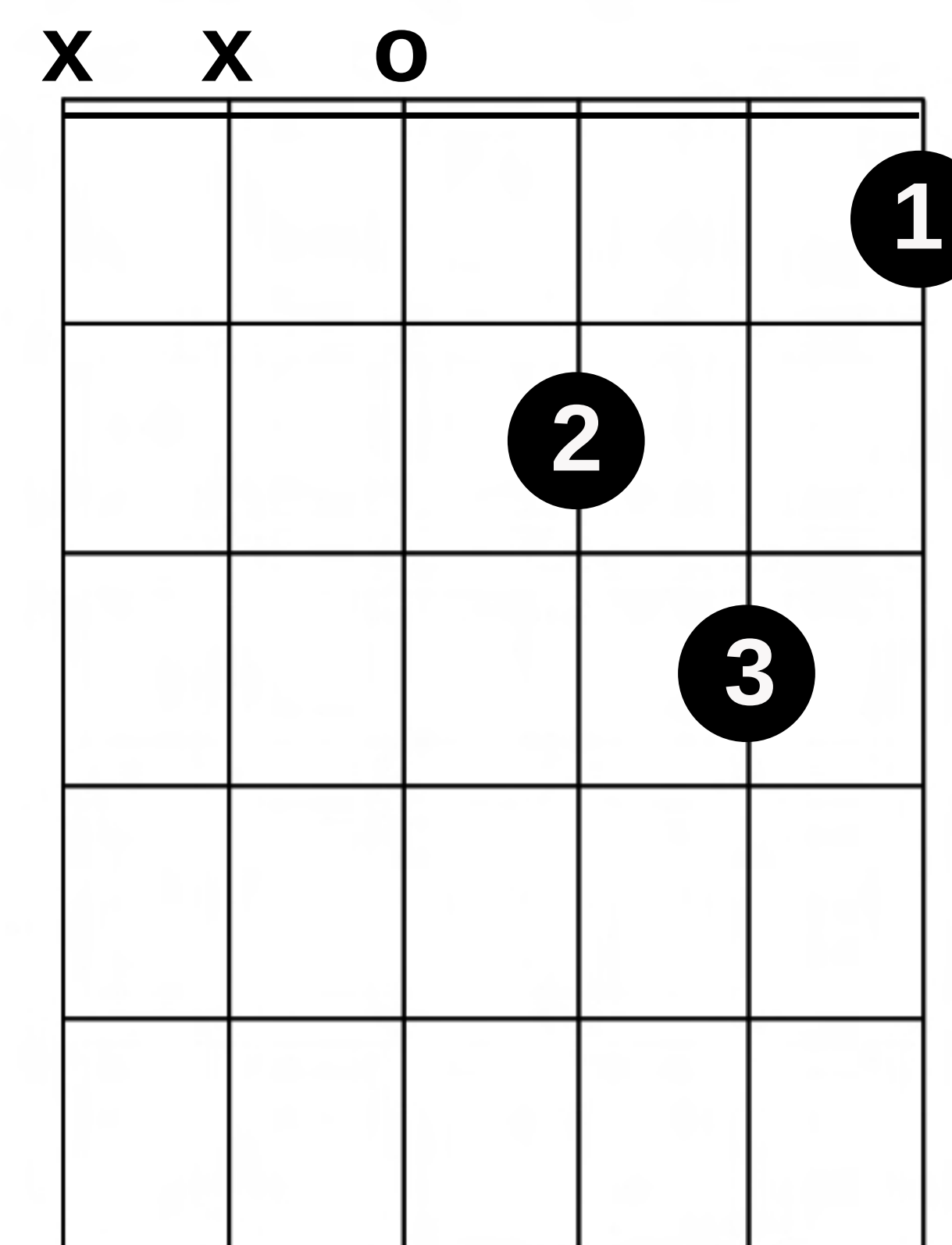
**E** (E major)



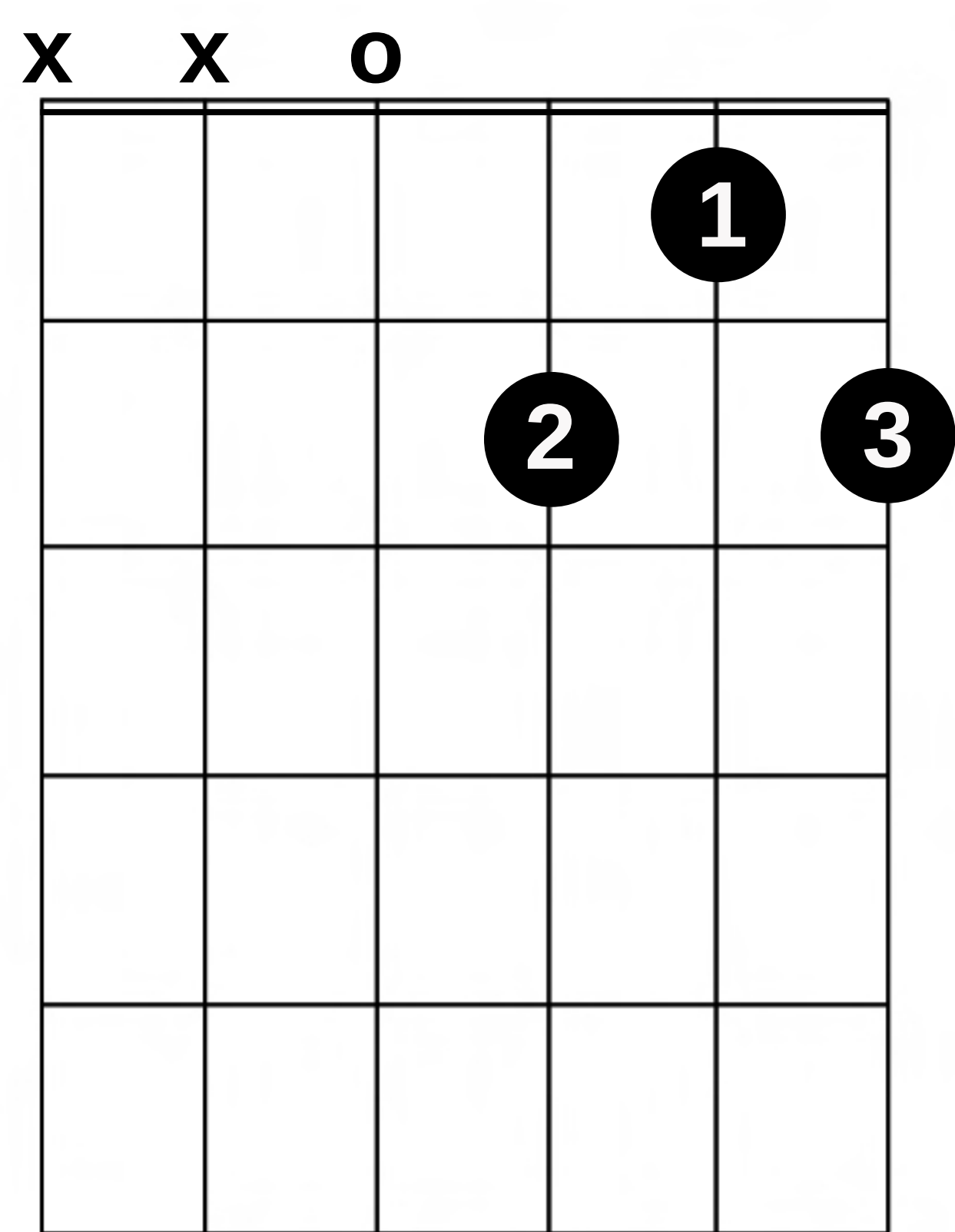
**C** (C major)



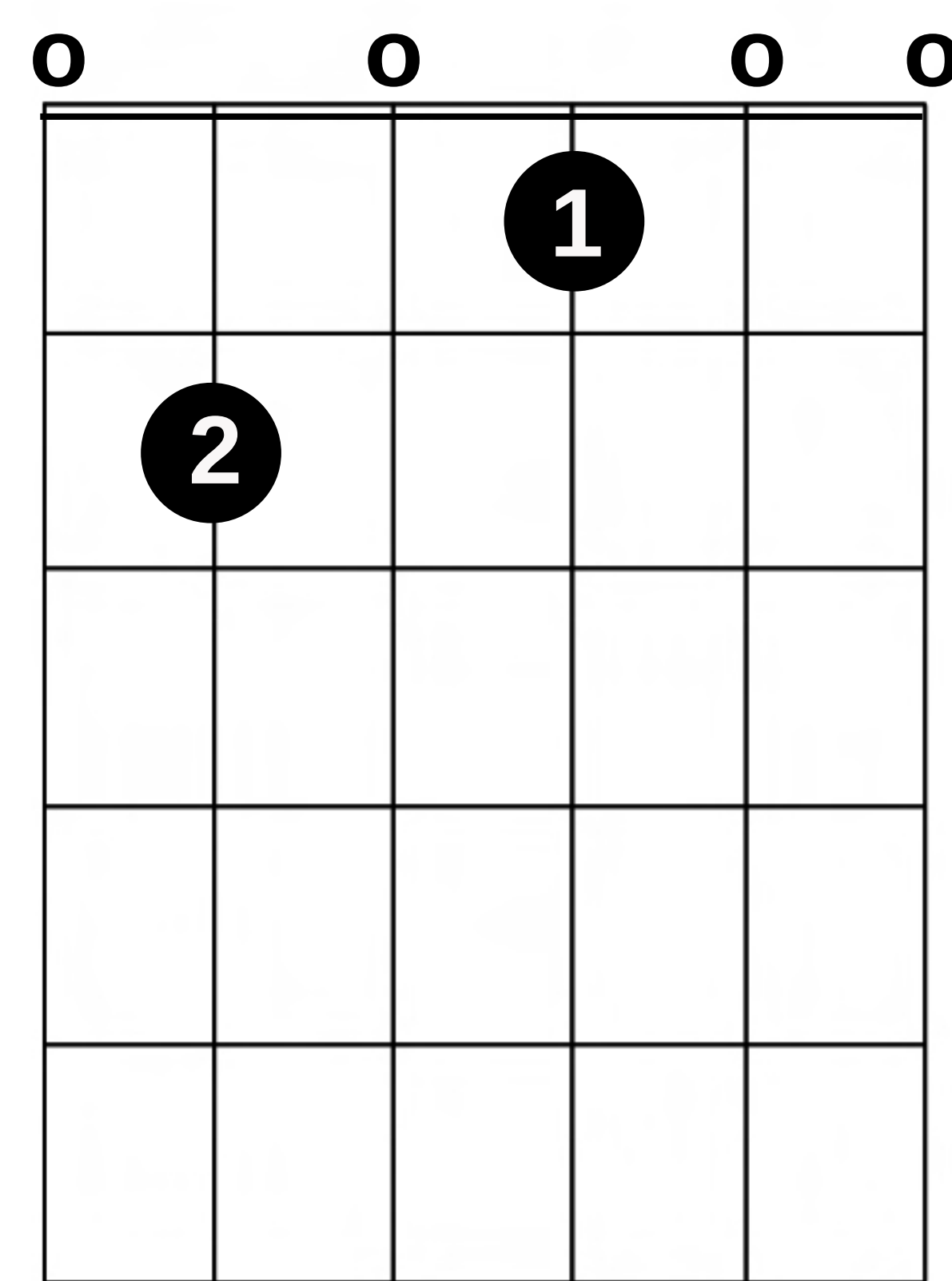
**Dm** (D minor)



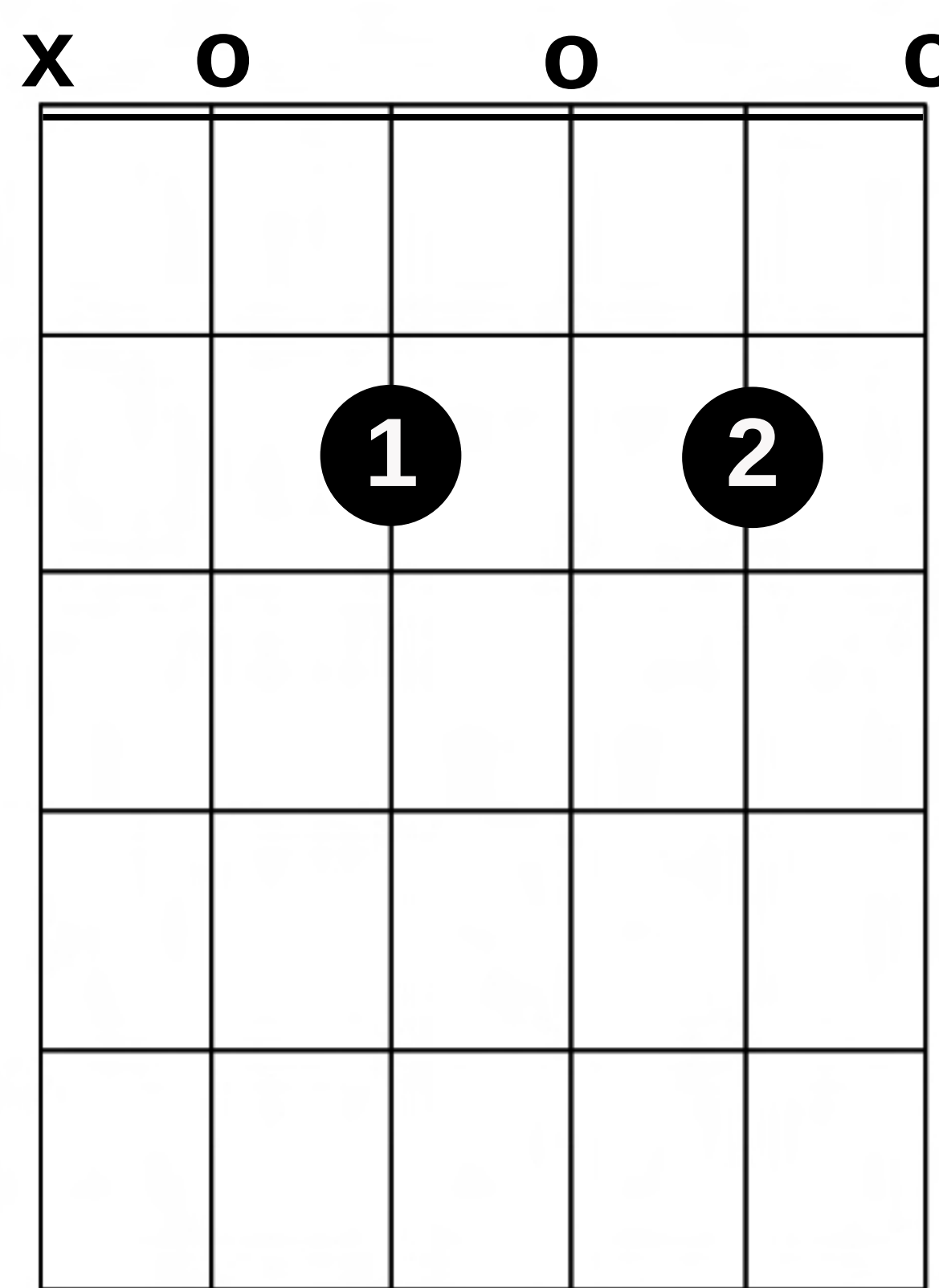
**D7** (D dominant 7)



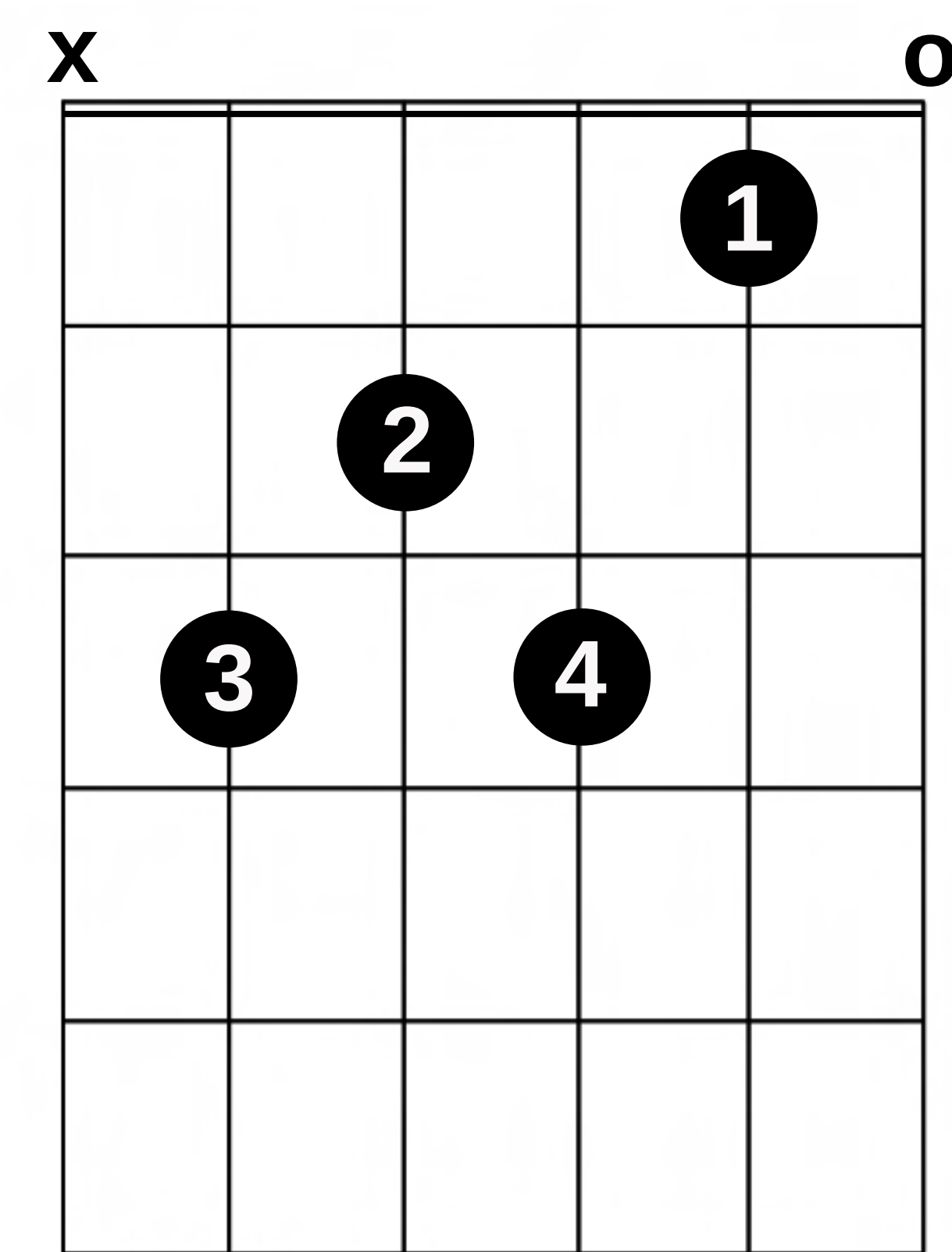
**E7** (E dominant 7)



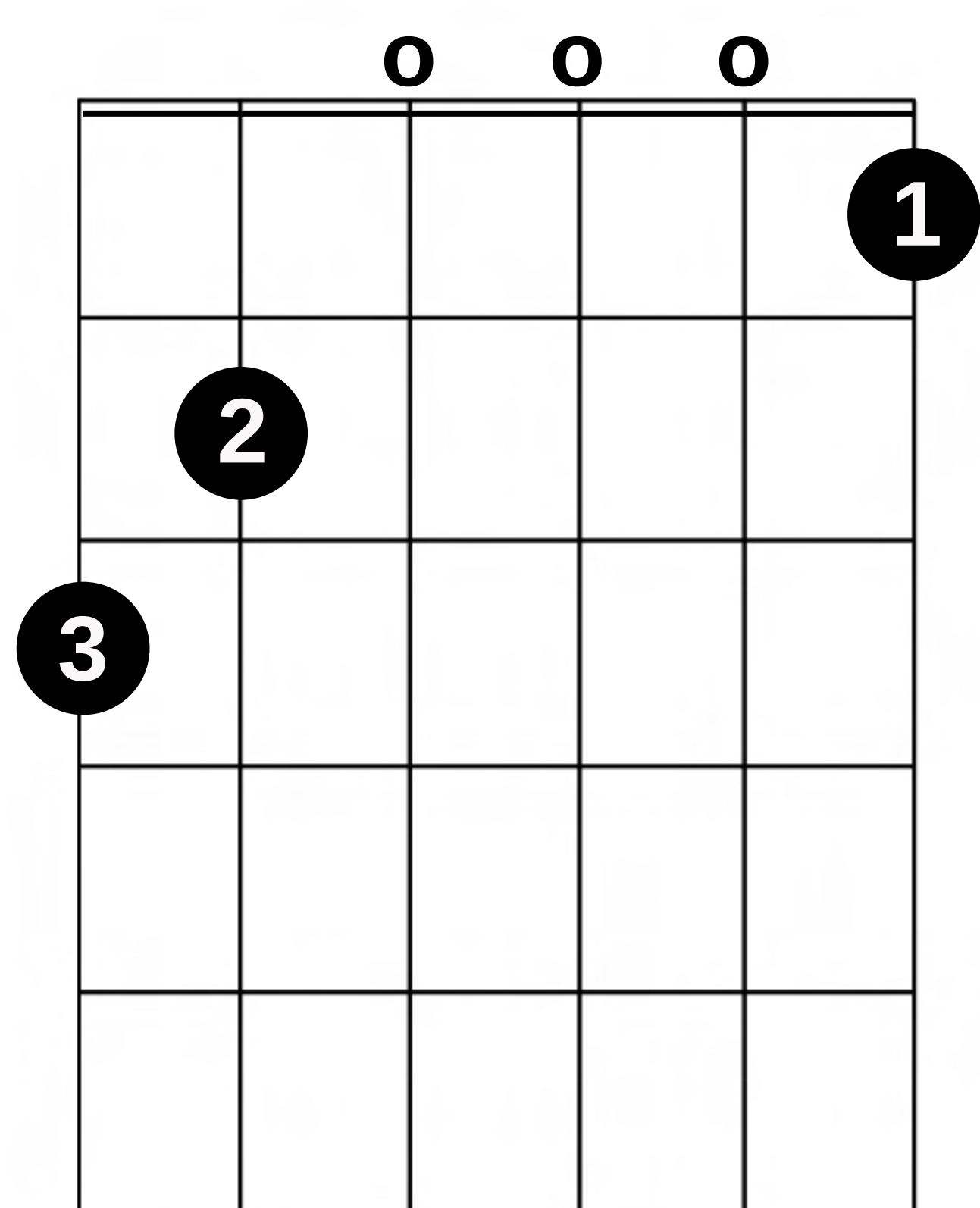
**A7** (A dominant 7)



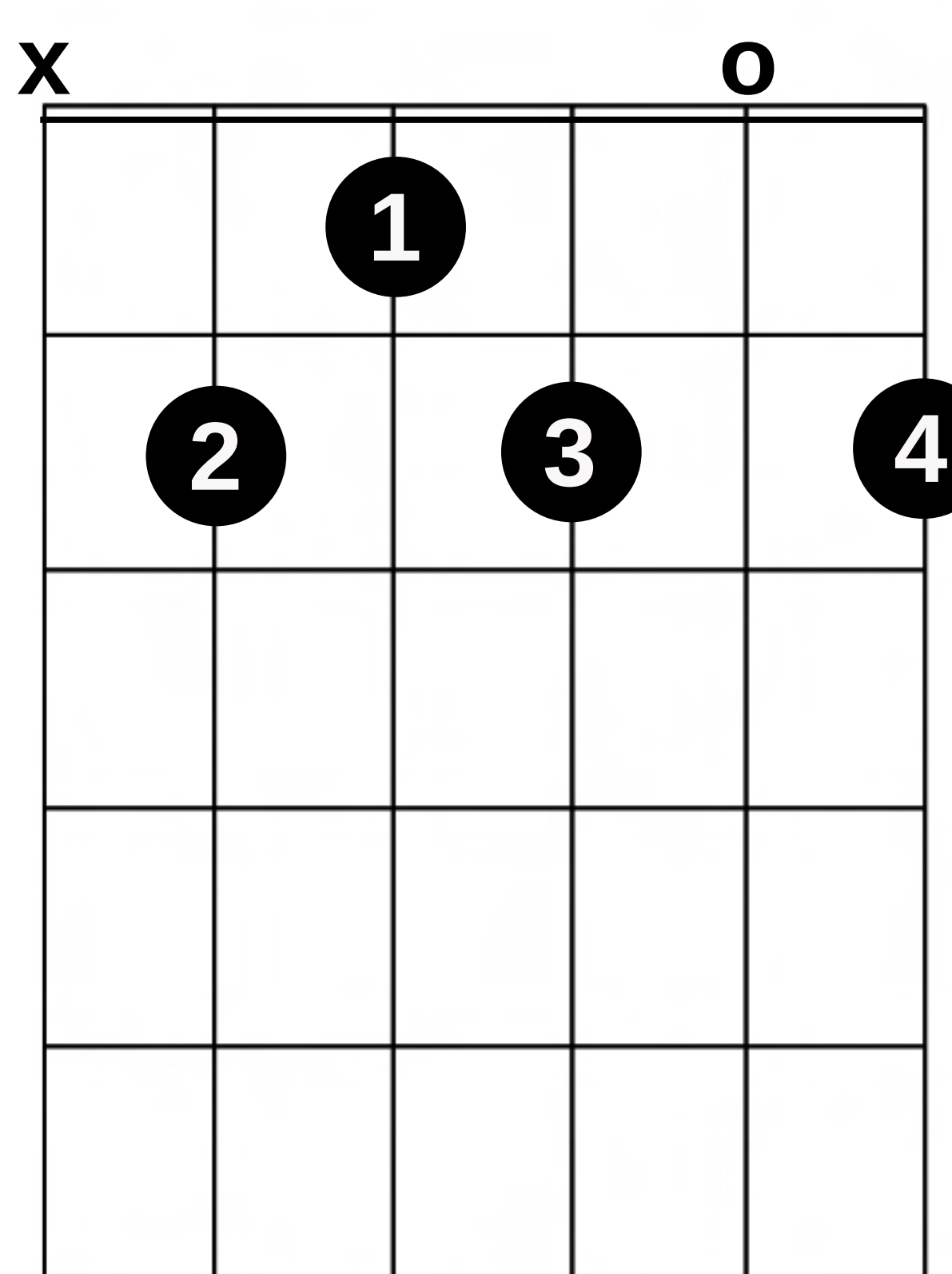
**C7** (C dominant 7)



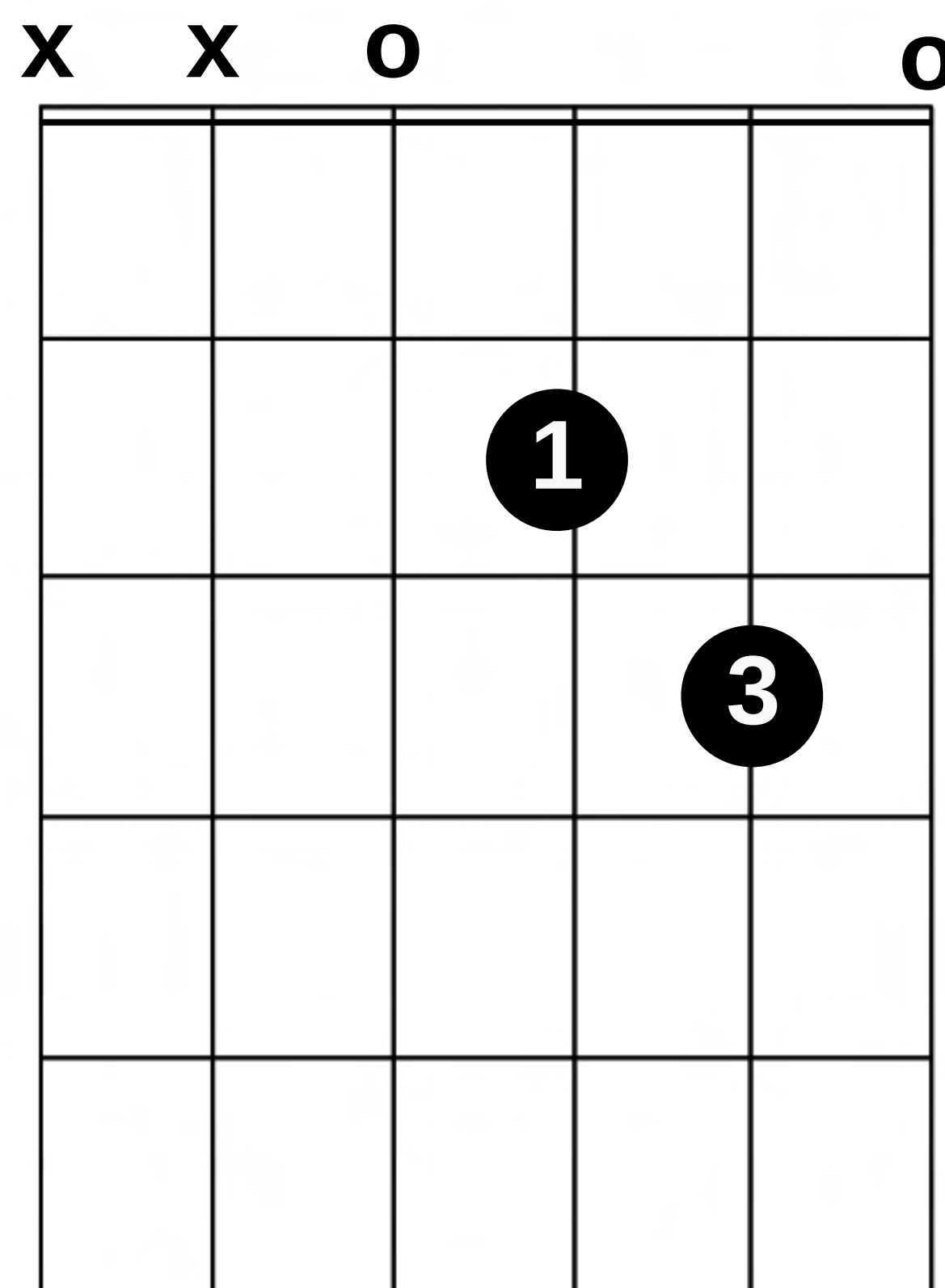
**G7** (G dominant 7)



**B7** (B dominant 7)



**Dsus2**



**F** (F Major)

